

Weslaco's Newest Luxury Duplex Community!

RIO STONE — Phase II —

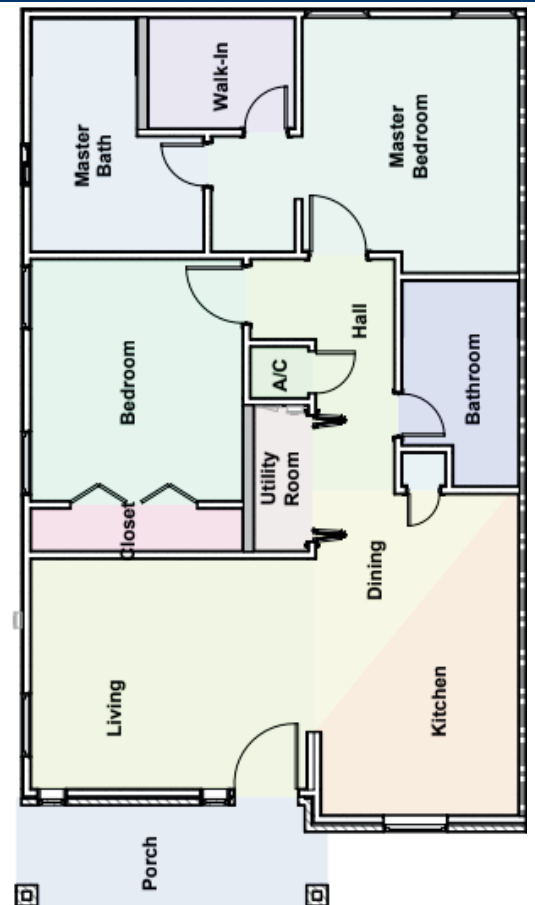


CONDO UNITS
Starting at \$130k

DUPLEX'S
Starting in the Mid \$200s

Rio Stone - Phase II is Weslaco's newest gated duplex community located off Milano Rd., south of Business 83. These units will be turnkey for any homebuyer or investor to add to their portfolio.

This community is located in close proximity to shopping, restaurants, Weslaco High School, South Texas College, and entertainment!



2 Bedrooms / 2 Baths
895 Sq Ft per Unit

For more information contact our sales team:

Sonia Flores - 956.463.2420

Richie Valdez - 956.793.9760

ReynaDevelopment.com

SanGabriel

PHASE II

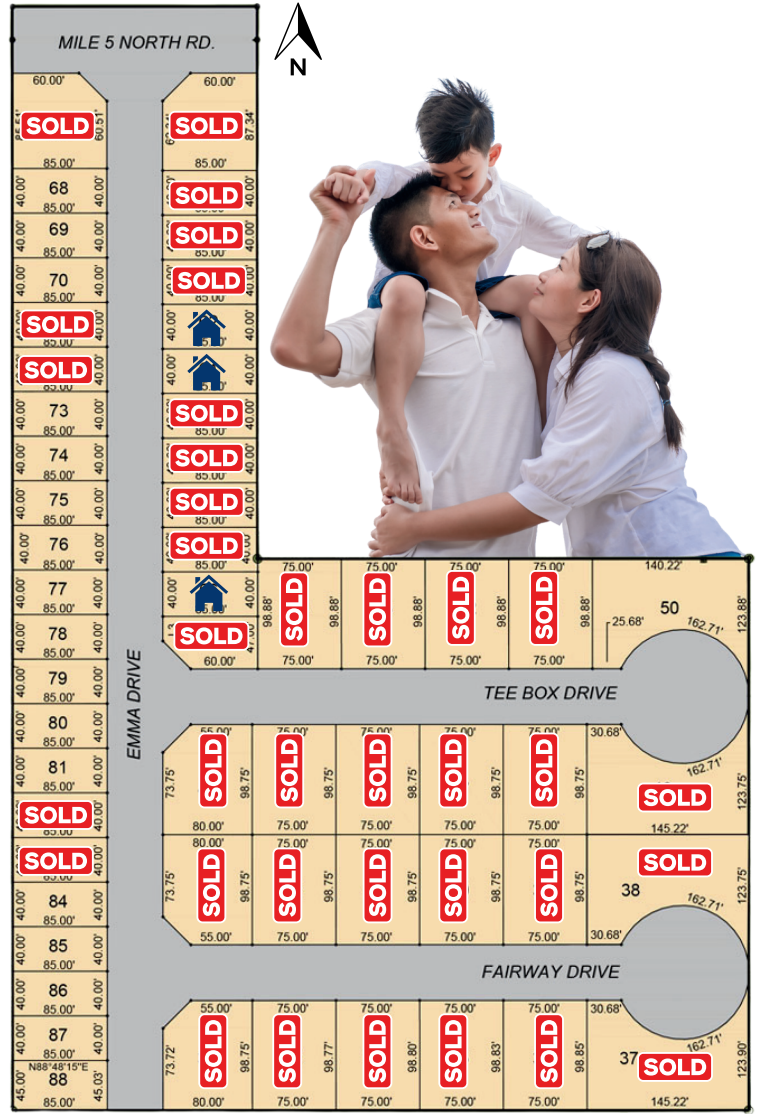
TIERRA SANTA



3407 Emma Dr, Weslaco, Tx

- \$210,000
- 1746 sq ft
- 3 bedrooms / 2.5 baths

- Prime location in Weslaco, TX the heart of the Rio Grande Valley!
- Adjacent to Tierra Santa Golf Course.
- Close proximity to South Texas College (STC) and Weslaco High School for educational opportunities.
- A mixture of townhome lots and residential homes.



• Townhome For Sale

Lots Starting at \$53,000!

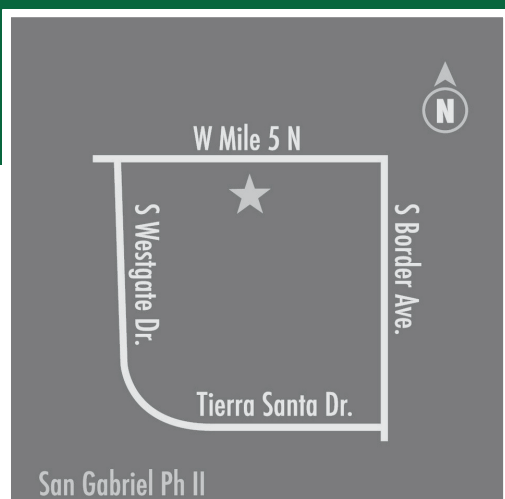


Your dream home awaits at San Gabriel Phase II. Whether you're seeking a spacious lot, custom-built townhome or a stunning residential home, we have the perfect space to suit your lifestyle. Enjoy the best of both worlds with serene surroundings and easy access to amenities like the Tierra Santa Golf Community, top tier schools and local parks. Embrace a life of comfort, convenience, and camaraderie in this thoughtfully planned community.



3409 Emma Dr, Weslaco, Tx

- 2 Story
- \$249,000
- 2117 sq ft
- 3 bedrooms / 2.5 baths



FOR MORE INFORMATION CONTACT SONIA FLORES

956.355.8278 | 956.44.REYNA

ReynaDevelopment.com

